

Light efficiency:

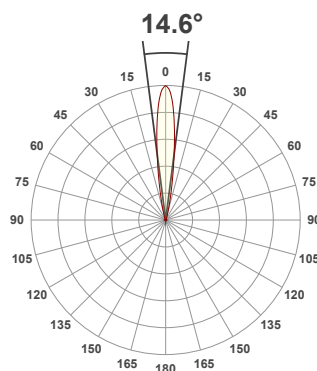
40 Lumen/Watt

Light quality:

CRI: 91.4

Color temperature:

3040 K



Product name:

90413-F_A-LED - LED51_3-30-SP - 350mA

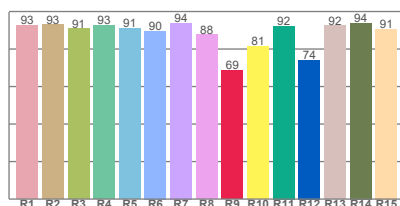
Item number:

Pinhole90 Fixed/Accent - LED51/3-30-SP - 350mA

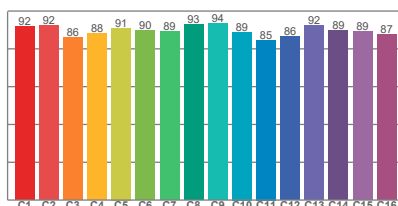
Delivered information for above fixture and LED combination.

Output: 594 Lumen Peak intensity: 6616 cd Power consumption: 14.8

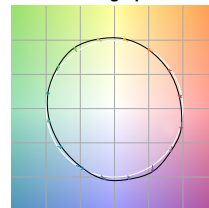
CRI R values



TM30 C Values

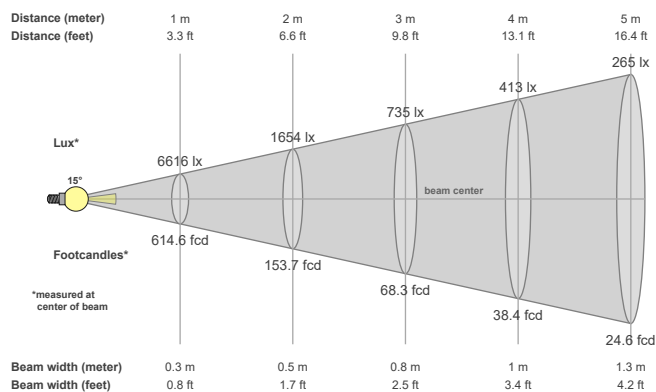


Color vector graphics



| Color temperature | Color rendering index | Red component | Color fidelity | Color gamut | Color quality scale | Color coordinate cie 1931 | Color coordinate cie 1931 | Color coordinate | Color coordinate | Color deviation from black body |
|-------------------|-----------------------|---------------|----------------|-------------|---------------------|---------------------------|---------------------------|------------------|------------------|---------------------------------|
| CCT | CRI | CRI R9 | TM30 Rf | TM30 Rg | CQS | x | y | u | v | Δuv |
| 3040 K | 91.4 | 68.5 | 89.7 | 102.5 | 89.0 | 0.434 | 0.403 | 0.249 | 0.347 | 0.0000 |

Beam details



Beam angels

| Beam angle 50% | Field angle 10% | Cutoff angle 2,5% |
|----------------|-----------------|-------------------|
| 14.6° | 28° | 42.9° |

Beam intensities

| Peak intensity | Int. ratio in 120° cone | Int. ratio in 90° cone |
|----------------|-------------------------|------------------------|
| 6616 cd | 99.7% | 99.2% |

Beam intensities from 1-20m

| 1m | 2m | 3m | 4m | 5m | 6m | 7m | 8m | 9m | 10m | 11m | 12m | 13m | 14m | 15m | 16m | 17m | 18m | 19m | 20m |
|----------|----------|---------|---------|---------|---------|---------|--------|--------|--------|--------|--------|--------|--------|--------|--------|--------|--------|--------|--------|
| 3.3ft | 6.6ft | 9.8ft | 13.1ft | 16.4ft | 19.7ft | 23ft | 26.2ft | 29.5ft | 32.8ft | 36.1ft | 39.4ft | 42.7ft | 45.9ft | 49.2ft | 52.5ft | 55.8ft | 59.1ft | 62.3ft | 65.6ft |
| 6616lx | 1654lx | 735lx | 413lx | 265lx | 184lx | 135lx | 103lx | 82lx | 66lx | 55lx | 46lx | 39lx | 34lx | 29lx | 26lx | 23lx | 20lx | 18lx | 17lx |
| 614.6fcd | 153.7fcd | 68.3fcd | 38.4fcd | 24.6fcd | 17.1fcd | 12.5fcd | 9.6fcd | 7.6fcd | 6.1fcd | 5.1fcd | 4.3fcd | 3.6fcd | 3.1fcd | 2.7fcd | 2.4fcd | 2.1fcd | 1.9fcd | 1.7fcd | 1.5fcd |

The above information is for 3000K colour temperature, for specific module information please see LED spec located on our website.

For information regarding other colour temperatures please refer to ies/ldt files available on the website.

Light planning Glare Evaluation According to UGR

| | | | | | | | | | | | |
|---|-----|---|-----|-----|-----|------|---|-----|-----|-----|------|
| p Ceiling | | 70 | 70 | 50 | 50 | 30 | 70 | 70 | 50 | 50 | 30 |
| p Walls | | 50 | 30 | 50 | 30 | 30 | 50 | 30 | 50 | 30 | 30 |
| p Floor | | 20 | 20 | 20 | 20 | 20 | 20 | 20 | 20 | 20 | 20 |
| Room size X Y | | Viewing direction at right angles to lamp axis | | | | | Viewing direction parallel to lamp axis | | | | |
| 2H | 2H | 8.2 | 8.5 | 8.3 | 8.7 | 8.9 | 8.2 | 8.5 | 8.3 | 8.7 | 8.9 |
| | 3H | 8.0 | 8.5 | 8.4 | 8.7 | 8.8 | 8.0 | 8.5 | 8.4 | 8.7 | 8.8 |
| | 4H | 8.1 | 8.6 | 8.5 | 8.8 | 9.0 | 8.1 | 8.6 | 8.5 | 8.8 | 9.0 |
| | 6H | 8.3 | 8.6 | 8.6 | 8.9 | 9.3 | 8.3 | 8.6 | 8.6 | 8.9 | 9.3 |
| | 8H | 8.3 | 8.7 | 8.6 | 9.0 | 9.4 | 8.3 | 8.7 | 8.6 | 9.0 | 9.4 |
| | 12H | 8.4 | 8.7 | 8.7 | 9.1 | 9.5 | 8.4 | 8.7 | 8.7 | 9.1 | 9.5 |
| 4H | 2H | 7.9 | 8.4 | 8.3 | 8.6 | 8.8 | 7.9 | 8.4 | 8.3 | 8.6 | 8.8 |
| | 3H | 8.0 | 8.3 | 8.3 | 8.7 | 9.1 | 8.0 | 8.3 | 8.3 | 8.7 | 9.1 |
| | 4H | 8.1 | 8.4 | 8.5 | 8.8 | 9.3 | 8.1 | 8.4 | 8.5 | 8.8 | 9.3 |
| | 6H | 8.3 | 8.7 | 8.8 | 9.0 | 9.3 | 8.3 | 8.7 | 8.8 | 9.0 | 9.3 |
| | 8H | 8.4 | 8.7 | 8.9 | 9.1 | 9.4 | 8.4 | 8.7 | 8.9 | 9.1 | 9.4 |
| | 12H | 8.5 | 8.8 | 9.0 | 9.2 | 9.7 | 8.5 | 8.8 | 9.0 | 9.2 | 9.7 |
| 8H | 4H | 8.1 | 8.4 | 8.6 | 8.8 | 9.1 | 8.1 | 8.4 | 8.6 | 8.8 | 9.1 |
| | 6H | 8.4 | 8.6 | 8.9 | 9.0 | 9.6 | 8.4 | 8.6 | 8.9 | 9.0 | 9.6 |
| | 8H | 8.6 | 8.8 | 9.1 | 9.3 | 9.9 | 8.6 | 8.8 | 9.1 | 9.3 | 9.9 |
| | 12H | 8.9 | 9.0 | 9.5 | 9.5 | 10.1 | 8.9 | 9.0 | 9.5 | 9.5 | 10.1 |
| 12H | 4H | 8.0 | 8.3 | 8.5 | 8.7 | 9.2 | 8.0 | 8.3 | 8.5 | 8.7 | 9.2 |
| | 6H | 8.4 | 8.6 | 8.9 | 9.1 | 9.7 | 8.4 | 8.6 | 8.9 | 9.1 | 9.7 |
| | 8H | 8.6 | 8.8 | 9.2 | 9.3 | 9.9 | 8.6 | 8.8 | 9.2 | 9.3 | 9.9 |
| Variation of the observer position for the luminaire distance S | | | | | | | | | | | |
| S = 1.0H | | 3.3 / -2.3 | | | | | 3.3 / -2.3 | | | | |
| S = 1.5H | | 5.6 / -2.7 | | | | | 5.6 / -2.7 | | | | |
| S = 2.0H | | 7.5 / -3.0 | | | | | 7.5 / -3.0 | | | | |
| Corrected glare indices referring to 594 lm total luminous flux | | | | | | | | | | | |